

The status of hard x-ray microfocusing at Shanghai Synchrotron Radiation Facility (SSRF)

Shuai Yan

*Shanghai Synchrotron Radiation Facility, Shanghai Institute of Applied Physics, CAS
NO.239 Zhangheng Road, Pudong District, Shanghai, China
Zip code: 201204*

The hard x-ray microprobe upgrade project at beamline BL15U1 at SSRF has obtained initial results. The new focusing system (fig. 1) is based on the hard x-ray fresnel zone plates with 50nm outermost width. The achieved resolution $\sim 200\text{nm}$ (fig. 2) is dominated by the source size and the optical aberrations of transport optics rather than by diffraction.



Fig. 1. The fresnel zone plates hard x-ray nano-focusing system.

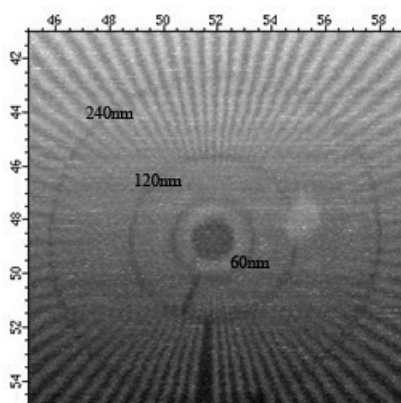


Fig. 2. Raster scanning XRF images of the siemens star test pattern.